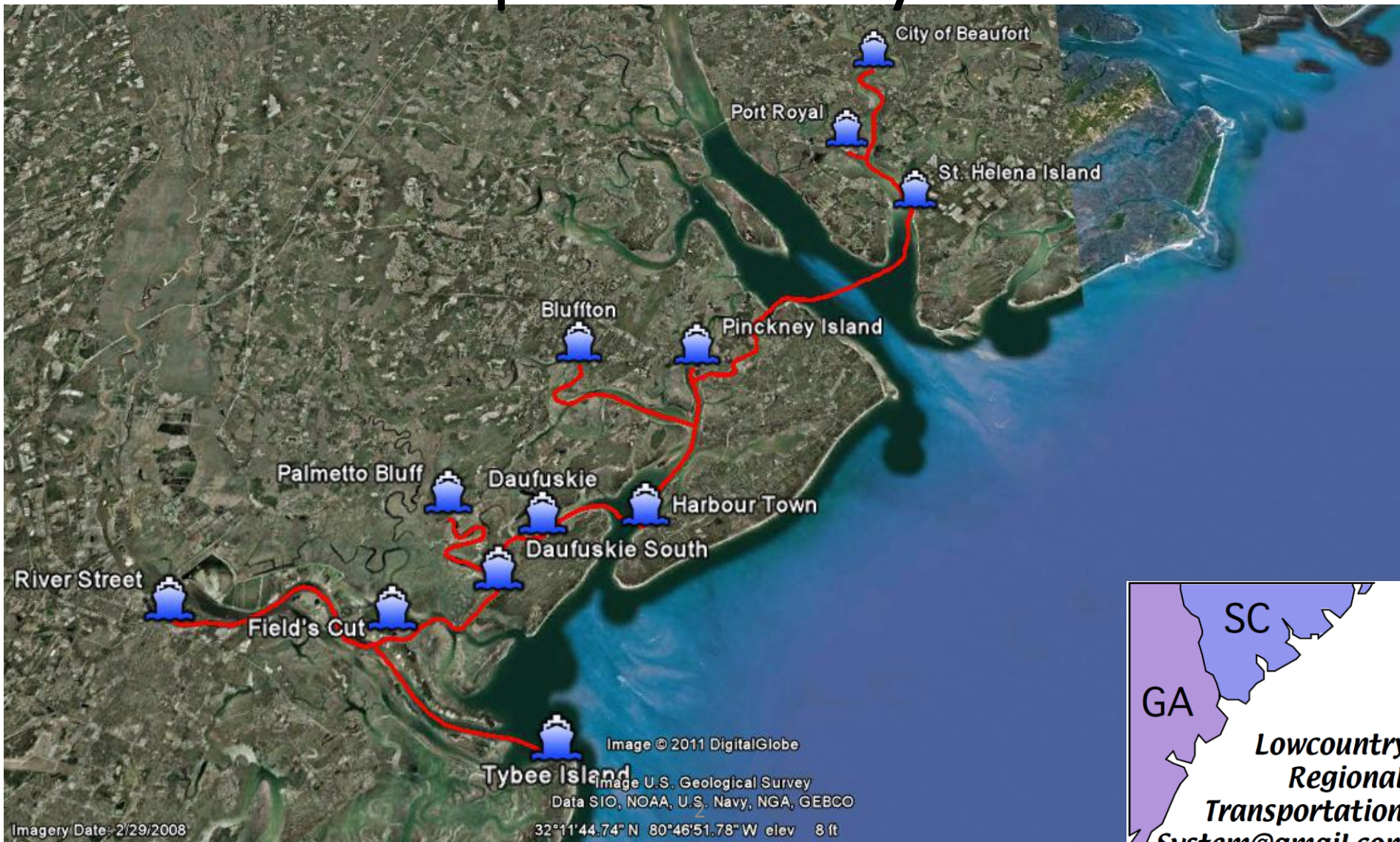


# A Lowcountry Regional Economic Development Opportunity

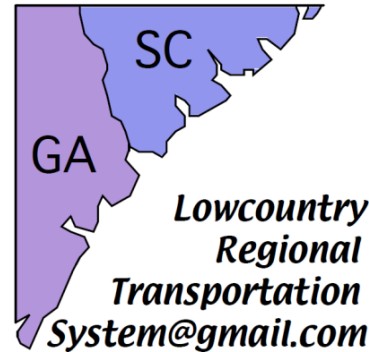
Creating a System that Links  
Communities, Destinations and  
Tourism Centers

# Lowcountry Regional Transportation System



# County Stakeholders

- Beaufort County
- Jasper County
- Allendale County
- Hampton County
- Colleton County
- Chatham County
- Effingham County
- Bryan County
- Liberty County

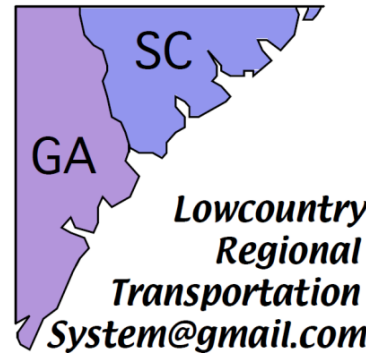


# Local Key Stakeholders

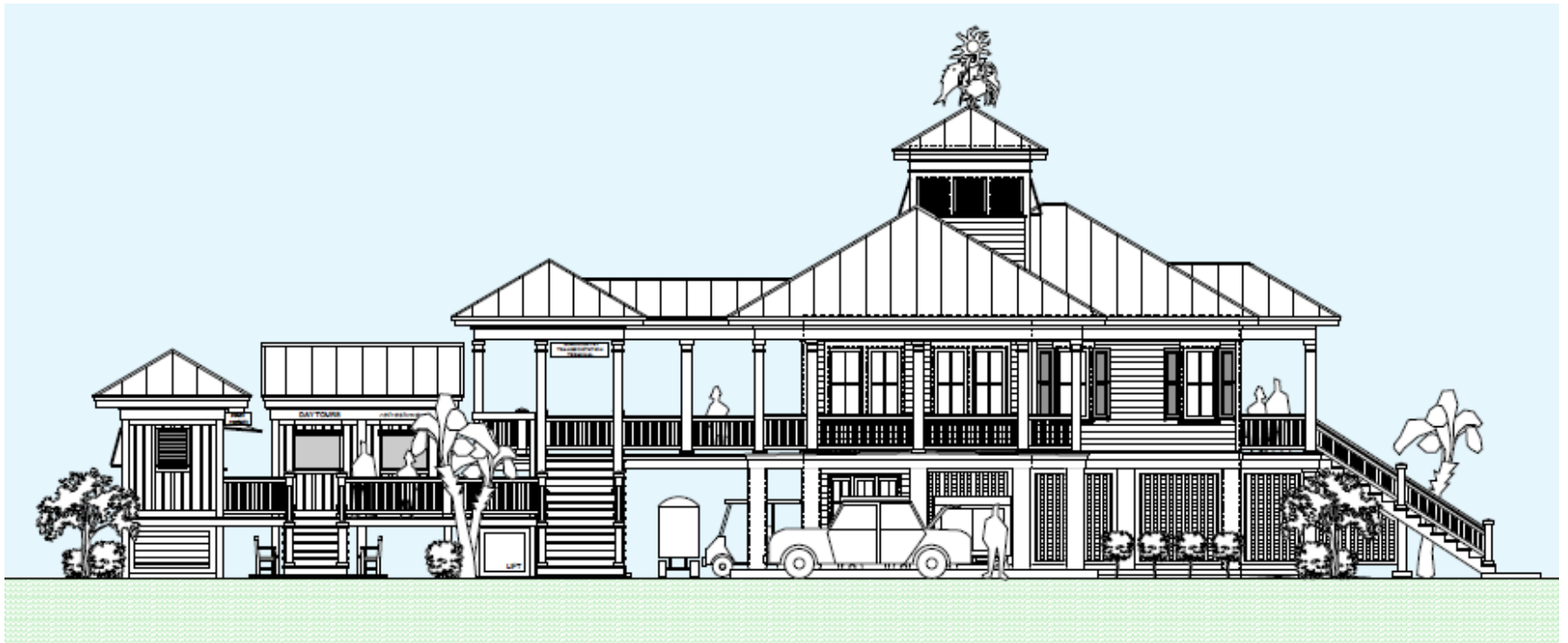
- Savannah
- Tybee Island
- CORE MPO Members
- Hilton Head Island
- Town of Bluffton
- City of Beaufort
- Hardeeville
- Ridgeland
- Port Royal
- Daufuskie Island
- St. Helena Island
- Savannah River COG
- Savannah CVB
- Georgia DOT
- CAT/LRTA
- Chambers of Commerce
- SC DOT
- LCOG
- SC PRT
- Gullah Geechee Corridor

# Existing and Potential Landings

- City of Savannah – River Street
- Chatham County – Hutchinson Island
- Tybee Island
- Beaufort County – Pinckney Island, Daufuskie, St. Helena's
- Hilton Head Island – Harbour Town
- City of Beaufort – City Marina
- Town of Bluffton
- Jasper County – Field's Cut

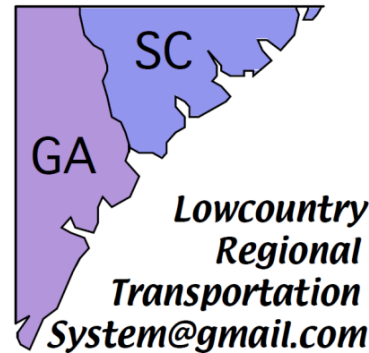


# Conceptual Terminal

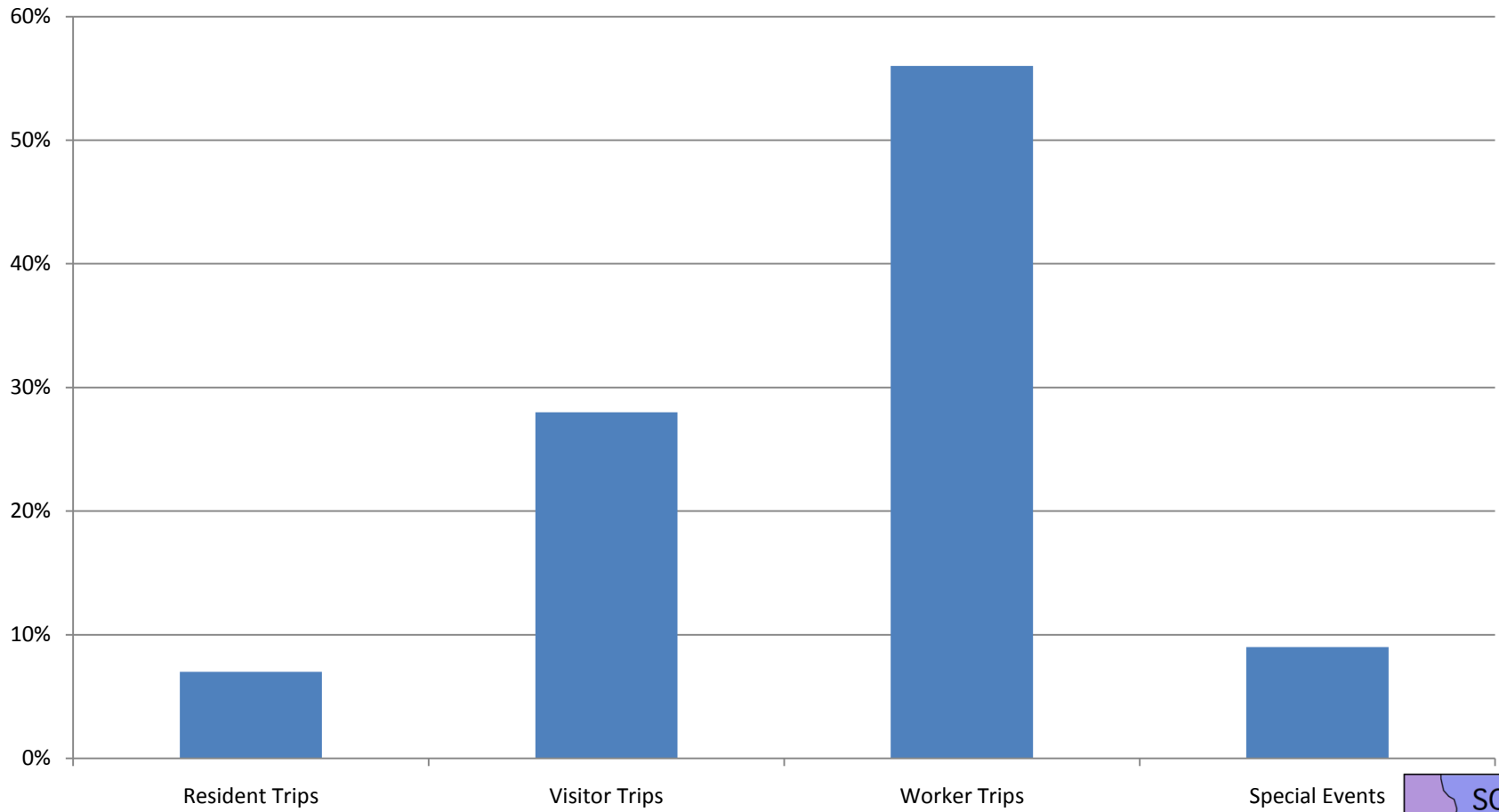


# Conceptual Schedule

- Early morning runs to accommodate workforce
- Mid-day runs for tourists, shoppers and locals
- Late afternoon runs for returning workforce
- Late evening runs for tourist-related businesses

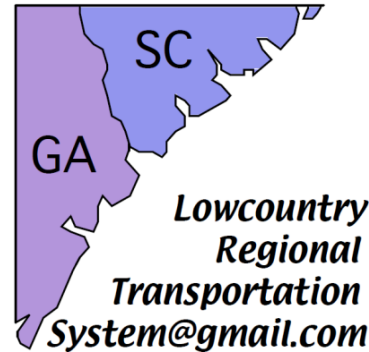


# Anticipated Ridership Breakdown



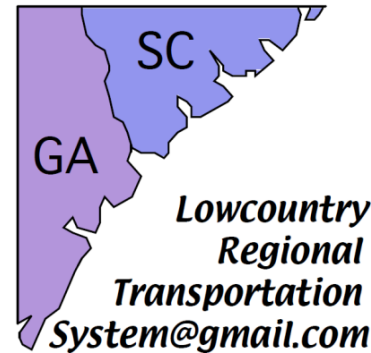
# Projected Ridership

- 2005 study projects 1.6 million one-way passengers annually for a regional system
- Projections were based upon surveys performed during the course of the 2005 study commissioned by CAT
- Daufuskie ferries have historically transported more than 600,000 one-way passengers in a year



# Benefits

- Creates new transportation hubs that will stimulate economic growth
- Creates Jobs Regionally
- Alleviates road congestion
- Socio-Economic Development
- Interconnects Existing Transit Systems

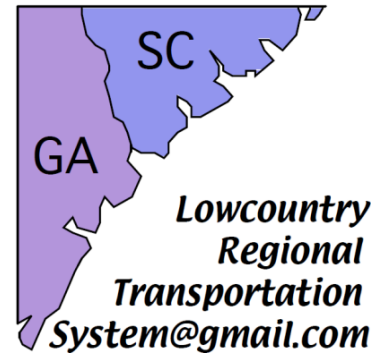


# Job Creation

- Employment within the Transportation System
- Hospitality Industry-Related Businesses
- Individual Transportation/Rental Agencies
- Construction Industry-Related Businesses
- Professional Support Businesses

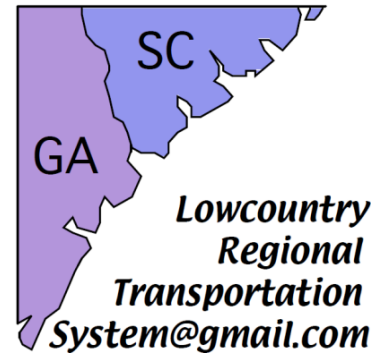
# Tourism Economics

- Savannah Tourism Expenditures
  - 6,130,000 overnight visitors in 2009
  - \$1.63 billion in expenditures
  - 2.2 day average length of stay
- HHI Tourism Expenditures
  - 2,016,000 overnight visitors in 2008
  - \$1.4 billion in expenditures
  - 5.2 day average length of stay
- Real Estate Implications



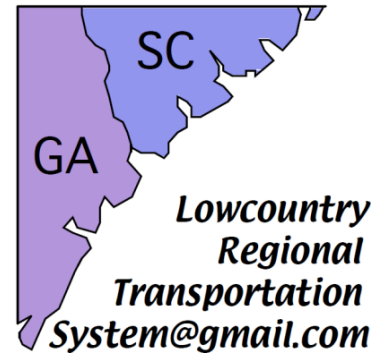
# Lowcountry Regional Stimulus Plan

- \$26 million in tourism revenue annually for Savannah
- \$28 million in tourism revenue annually for Hilton Head



# Lowcountry Regional Stimulus Plan

- **\$2+ billion** in economic activity added to regional economy solely in new construction
- \$40 million in additional property tax revenue annually for Beaufort County

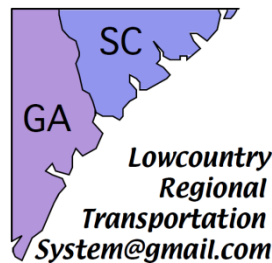


# Potential Funding and Revenue Sources

- Daily ticket revenue
- Monthly and annual ticket sales
- Pre-paid bulk ticket purchases
- Ferry tax improvement districts
- Municipal, County and Federal contributions
- Georgia & South Carolina DOT contributions
- Other grant opportunities
- Advertising opportunities
- Potential developer contributions
- Private Sector Investment Opportunities

# Getting Started

- Get Involved!
- Establish the political will to support this effort
- Empower transportation Authorities to collaborate on this effort
- Create a regional ferry task force
- Publicly state scope of effort, goals and timelines to encourage accountability
- Identify public and private opportunities
- Solidify public and private funding sources



# Lowcountry Regional Transportation System

## Discussion

